

## KEY HIGHLIGHTS

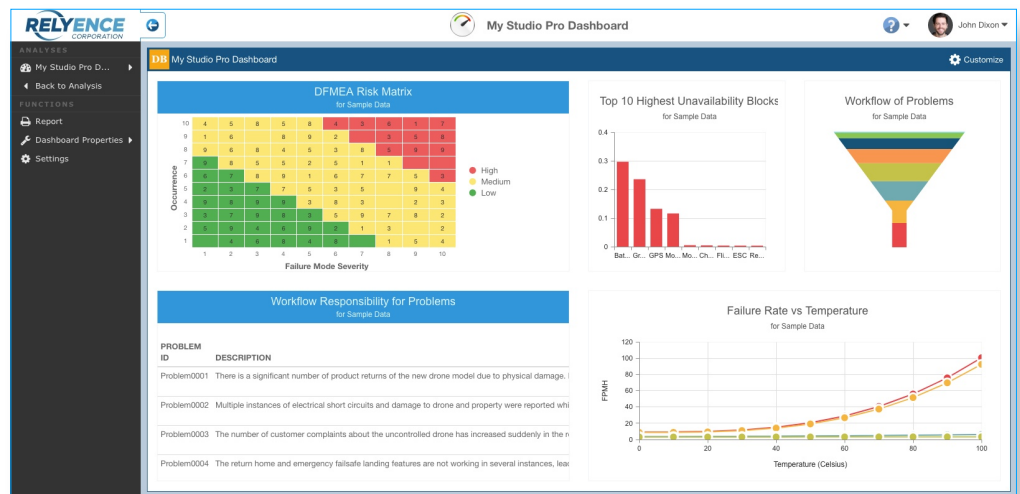
- Integrated suite
- Stand-alone tools
- FMEA, FMECA
- FRACAS, CAPA
- Fault Tree
- Reliability Prediction
- Reliability Block Diagram
- Maintainability Prediction
- Weibull
- ALT
- Browser-based
- On-premise or cloud-based
- Training and implementation
- Knowledgeable tech support
- Free, no install trial

## FMEA · FRACAS · Fault Tree · Reliability Prediction RBD · Maintainability Prediction · Weibull · ALT

**Relyence® offers a complete solution for all your reliability and quality software needs. Along with our software tools, we offer top-notch technical support, implementation services, and training.**

**The Relyence Solution.** Providing seamless integration between FMEA (including Boundary Diagrams, P-Diagrams, Process Flow Diagrams, Control Plans, and DVP&R), FRACAS, Fault Tree, Reliability Prediction, RBD, Maintainability Prediction, Weibull, and ALT analyses, the Relyence tool suite empowers you to effectively manage your products throughout their lifecycle. You can use each module stand-alone, or combine the tools you need in our Relyence Studio integrated platform.

**Power & Innovation.** Relyence tools offer an impressive list of features including customizable cross-module Dashboards; user-interface customization; flexible report generation; data importing and exporting; API functionality; device libraries; Workflow, Approvals, and Notifications; user and group roles and permissions; and Relyence innovations such as *always-in-sync™* technology, *Knowledge Banks™* for lessons learned reusability, *Intelligent Part Mapping™* for device decoding, *FMEA Data Autoflow™* for automated data handling, and *Failure Direct Connect™* for FMEA-FRACAS integration.

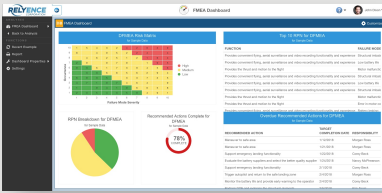


**Flexibility & Collaboration.** All Relyence tools can be accessed from any computer, PC, Mac, laptop, tablet, or smartphone for ultimate flexibility and team collaboration. You can use Relyence either as an on-premise installation on individual computers or a network, or as a zero-client, browser-based platform with your data hosted in the Microsoft cloud or in your own private cloud. The choice is yours!

**Rely on Excellence.** In conjunction with our software tools, we provide world-class services to help ensure your success. Our Implementation and Training teams can get you up to speed quickly, and our Technical Support team consistently provides support that is unparalleled in the industry.

**TRY FOR FREE**

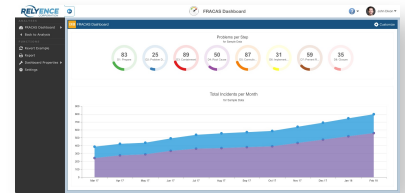
## FMEA



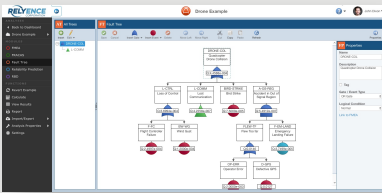
- Perform powerful, organized, and efficient Failure Mode and Effects Analyses using **AIAG, SAE, AIAG & VDA, MIL-STD-1629, or custom** formats.
- Support for **Design and Process FMEAs, piece-part FMEAs, FMEA-MSRs, Boundary Diagrams, P-Diagrams, DVP&R, Process Flow Diagrams, Control Plans, and FMD.**
- Relyence-only **Knowledge Banks, Data Autoflow, and always-in-sync** for unmatched FMEA efficiency.

## FRACAS

- Flexible **corrective action** management platform supporting **8D, DMAIC, PDCA, and customized processes.**
- FMEA integration with **Failure Direct Connect.**
- Calculate actual real-time metrics including **Failure Rate, MTBF, MTTR, Availability, Trend Score,** as well as **custom Formulas.**
- Create your own **Workflow, Approvals & Notifications** process for task tracking.



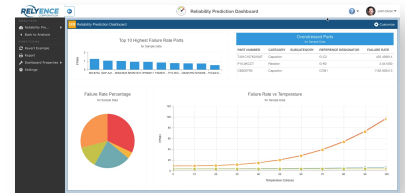
## Fault Tree



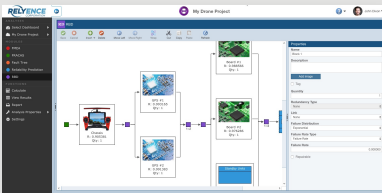
- Comprehensive **risk and safety assessment** using Fault Tree Analysis (FTA) techniques, including support for **CCF groups, disjoint events, and fault tree and event libraries.**
- Create **organized and visually impressive fault trees,** using a wide variety of **logic gates and events,** and an expansive set of **input models.**
- Calculate an array of **availability metrics** including **cut sets and importance measures.**

## Reliability Prediction

- Support for **MIL-HDBK-217F Notice 2, Telcordia SR-332 Issue 4, 217Plus 2015 Notice 1, ANSI/VITA 51.1, China's 299C, and NPRD/EPRD.**
- Feature-packed with **dashboards, system modeling, what-if? analyses, mission profiles, parts libraries, Intelligent Part Mapping, default values, and BOM import.**
- Perform **allocation and derating** analyses.



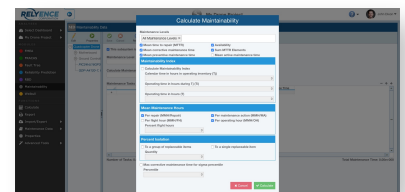
## RBD



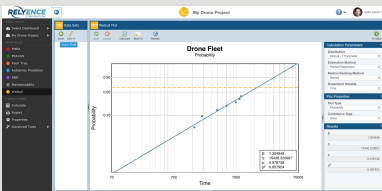
- Create models incorporating **series, parallel, and hot and cold standby redundancy configurations.**
- **Calculate metrics** including **reliability, availability, downtime, failure frequency, MTTR, MTBF, and path and cut sets** with calculation engine supporting **analytical calculations and Monte Carlo simulation.**
- Use **sub-diagrams** for diagram organization and reusability.
- **Integrate** seamlessly with other products including Reliability Prediction and Weibull.

## Maintainability Prediction

- Supports **MIL-HDBK-472, Procedures 2, 5A, and 5B.**
- Supports **Tasks, Tasks Groups, FD&I Outputs, and Maintainability Groups.**
- Calculates an extensive list of results including **MTTR (Mean Time to Repair), Mean Corrective Maintenance Time, Mean Preventive Maintenance Time, Mean Maintenance Man Hours,** and a host of other **maintenance and repair metrics.**



## Weibull



- Wide range of distributions supported including **Weibull, Lognormal, Normal, Gumbel, Exponential, and Rayleigh.**
- An array of **estimation methods, confidence types, and confidence methods.**
- **Visually appealing plots** with numerous plot types supported.
- Built-in **Best Fit** distribution analysis and **Analytics Calculator.**

## ALT

- Multiple distributions supported including **Weibull, Lognormal, Exponential, and Rayleigh.**
- Several stress models supported including **Arrhenius, Eyring, Log-Linear, and Inverse Power Law.**
- Plot types include **Acceleration Factor vs Stress, Failure Rate vs Time, PDF (Probability Density Function) Plot, Probability, Reliability vs Time, Unreliability vs Time, and Standard Deviation vs Stress.**
- Built-in **Best Fit** distribution analysis and **Analytics Calculator.**

